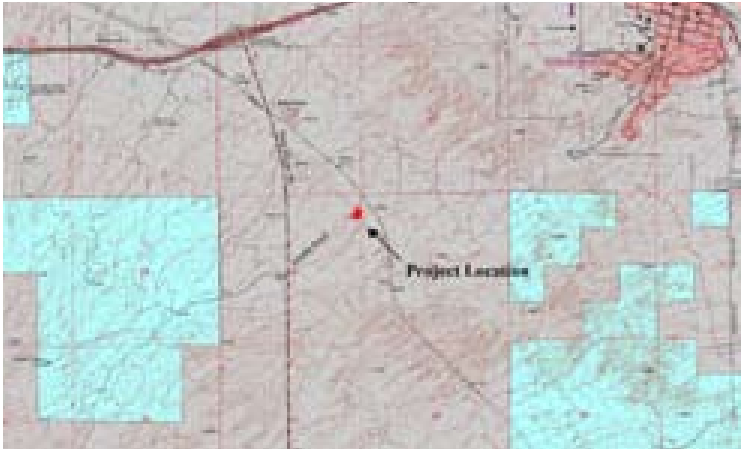


# WHETSTONE SUBSTATION ENVIRONMENTAL REPORT

SULPHUR SPRINGS VALLEY ELECTRIC COOPERATIVE, INC.

Benson, Arizona



## Project Description

Transcon served as National Environmental Policy Act compliance manager and Environmental Report preparer for the proposed development of an electrical substation for Sulphur Springs Valley Electric Cooperative. This project involved natural, cultural, and human resource inventory and impact assessment for a proposed substation in Benson, Arizona. Transcon incorporated the results of this analysis into an Environmental Report prepared under the direction of the Rural Utilities Service. The project involved the coordination with various land or resource management agencies including the US Army Corps of Engineers, US Fish and Wildlife Service, and the Arizona Game and Fish Department. The project also involved a cultural resource literature review and pedestrian survey, the preparation of a Cultural Resource Technical Report, and consultation with the Arizona State Historic Preservation Office.

## Agency Coordination

US Army Corps of Engineers, US Fish and Wildlife Service, Arizona Department of Agriculture, Arizona Department of Environmental Quality, Arizona Game and Fish Department, Arizona Natural Resource Conservation Service, Arizona State Historic Preservation Office, seven Native American Tribes, and various local agencies.

